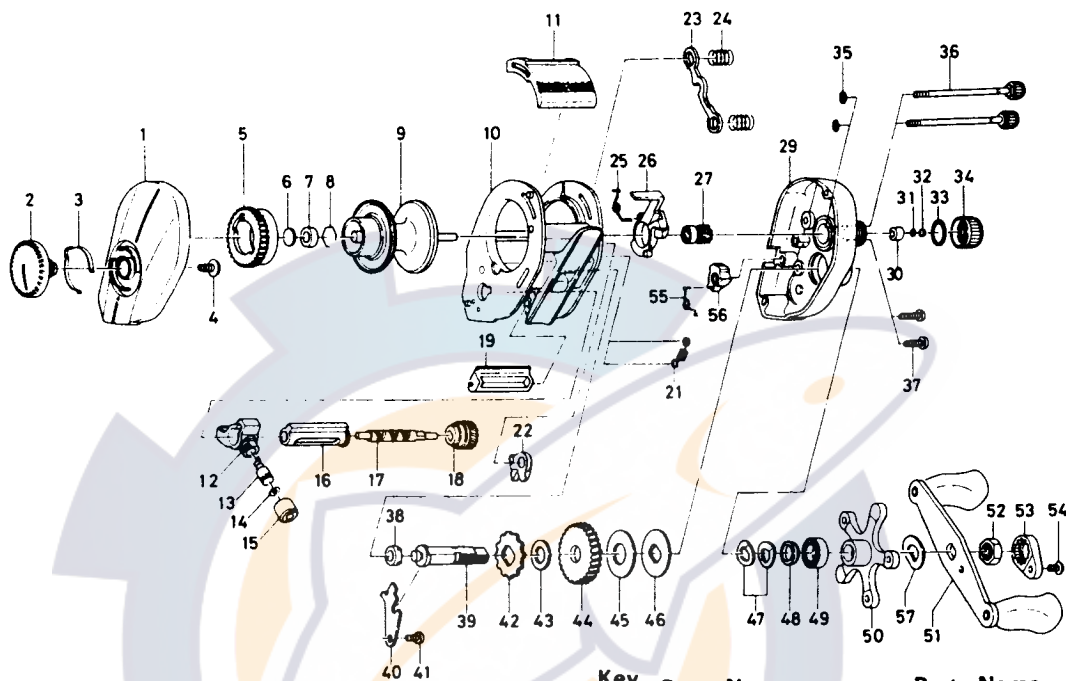




# BAITCASTING REEL MA10-2B/15-2B



Key No.	Parts No.	Parts Name
1	E23-8902	Left side plate
2	E23-9701	Brake adjusting knob
3	B74-7702	Brake click spring
4	B84-2102	Brake adjusting knob screw
5	E23-9501	Magnet holder
6	375-7400	Spacer A
7	B55-0301	Bushing A
8	B42-1601	Bearing retainer
9	E23-9902	Spool assembly
10	E37-0402	Frame assembly
11	E23-7102	Clutch lever
12	E16-6301	Line guide
13	121-4212	Line guide pawl
14	375-4100	Line guide washer
15	342-4801	Pawl cap
16	E23-8201	Level wind guard
17	E24-7101	Worm shaft
18	B99-2001	Worm shaft gear
19	E23-7002	Line guard
21	E30-6001	Clutch trip plate spring
22	E23-8001	Anti-reverse pawl
23	E23-7701	Yoke
24	E16-7101	Yoke spring
25	E34-6601	Clutch cam spring
26	E23-7401	Clutch cam
27	E23-7801	Pinion gear
29	E23-8316	Right side plate
30	E34-2401	Bushing C
31	E16-9201	Spool adjusting cap metal
32	E17-0501	Spacer B
33	171-5201	"O" ring A

Key No.	Parts No.	Parts Name
11	E23-7102	Clutch lever
12	E16-6301	Line guide
13	121-4212	Line guide pawl
14	375-4100	Line guide washer
15	342-4801	Pawl cap
16	E23-8201	Level wind guard
17	E24-7101	Worm shaft
18	B99-2001	Worm shaft gear
19	E23-7002	Line guard
21	E30-6001	Clutch trip plate spring
22	E23-8001	Anti-reverse pawl
23	E23-7701	Yoke
24	E16-7101	Yoke spring
25	E34-6601	Clutch cam spring
26	E23-7401	Clutch cam
27	E23-7801	Pinion gear
29	E23-8316	Right side plate
30	E34-2401	Bushing C
31	E16-9201	Spool adjusting cap metal
32	E17-0501	Spacer B
33	171-5201	"O" ring A

Key No.	Parts No.	Parts Name
34	E23-8401	Cast control cap
35	B85-3101	"O" ring B
36	B91-1706	Right side plate screw
37	E13-0501	Set plate screw
38	B55-0301	Bushing B
39	E23-7501	Drive shaft
40	E23-7601	Drive shaft retainer
41	B83-4402	Drive shaft retainer screw
42	E32-7701	Anti-reverse ratchet
43	375-7103	Drive shaft washer
44	B36-0102	Drive gear
45	B36-0202	Drag washer
46	B36-0301	Key washer
47	150-8901	Drag spring washer
48	E20-8501	Spacing sleeve
49	E15-4001	Ball bearing
50	E23-8702	Star drag
51	E30-5201	Handle assembly
52	B43-3601	Handle nut
53	B43-3902	Handle nut plate
54	351-1801	Handle nut plate screw
57	150-9001	Friction washer

Key No.	Parts No.	Parts Name
34	E23-8401	Cast control cap
35	B85-3101	"O" ring B
36	B91-1706	Right side plate screw
37	E13-0501	Set plate screw
38	B55-0301	Bushing B
39	E23-7501	Drive shaft
40	E23-7601	Drive shaft retainer
41	B83-4402	Drive shaft retainer screw
42	E32-7701	Anti-reverse ratchet
43	375-7103	Drive shaft washer
44	B36-0102	Drive gear
45	B36-0202	Drag washer
46	B36-0301	Key washer
47	150-8901	Drag spring washer
48	E20-8501	Spacing sleeve
49	E15-4001	Ball bearing
50	E23-8702	Star drag
51	E30-5201	Handle assembly
52	B43-3601	Handle nut
53	B43-3902	Handle nut plate
54	351-1801	Handle nut plate screw
57	150-9001	Friction washer

### MA15-2B Special parts

Key No.	Parts No.	Parts Name
1	E23-8905	Left side plate
9	E28-5304	Spool assembly
10	E37-0802	Frame assembly
11	E28-3702	Clutch lever
16	E31-2001	Level wind guard
17	E28-4601	Worm shaft
19	E28-3502	Line guard
29	E23-8318	Right side plate
36	B91-1708	Right side plate screw
55	E31-1801	Anti-reverse lever spring
56	E30-9501	Anti-reverse lever